

AWLS USER MANUAL

FULL SIZE 18650, COMPACT 18350, PSF-MK6 HEAD

GET THE BEST FROM YOUR AWLS

YOUR HRT AWLS ILLUMINATION TOOL HAS BEEN DESIGNED AND MANUFACTURED TO PROVIDE YEARS OF RELIABLE SERVICE. PLEASE REVIEW THIS MANUAL TO ENSURE OPTIMAL PERFORMANCE.

SPECIFICATIONS

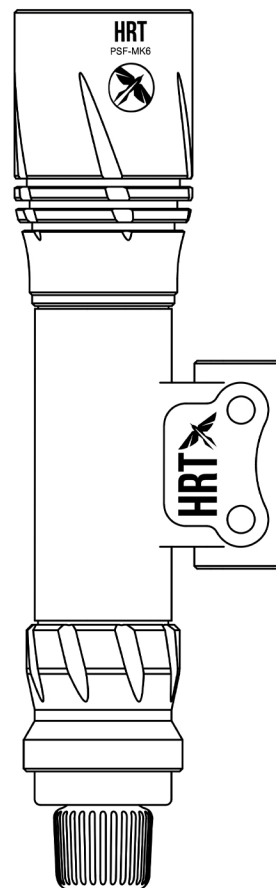
OUTPUT	1700 LUMENS
INTENSITY	90,000 CANDELA
RUNTIME	18350: 32M, 18650: 102M
WEIGHT (W/ BATTERY)	18350: 5.8oz, 18650: 7.5oz
LENGTH	18350: 5.5", 18650: 6.6"
HEAD DIAMETER	1.25"

PSF-MK6 LED HEAD

AWLS BODY / MOUNT

TAIL CAP

ODA TAIL SWITCH

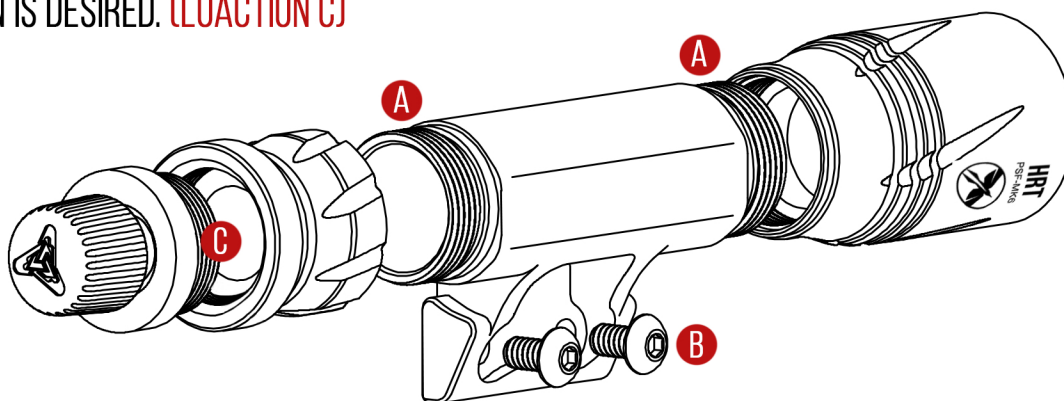


INSTALLATION

APPLY 100% PURE SILICONE GREASE ONCE A YEAR TO LUBRICATE THREADS AND O-RINGS. (LOCATION A)

THE M-LOK SCREWS (1/8 HEX, X2) NEED TO BE TIGHTENED TO:
35 IN-LB FOR METAL RAILS, 15 IN-LB FOR POLYMER RAILS (LOCATION B)

DO NOT GREASE THE ODA-TO-TAILCAP THREADS. APPLY MEDIUM-STRENGTH THREADLOCKER IF PERMANENT INSTALLATION IS DESIRED. (LOCATION C)



AWLS USER MANUAL

FULL SIZE 18650, COMPACT 18350, PSF-MK6 HEAD

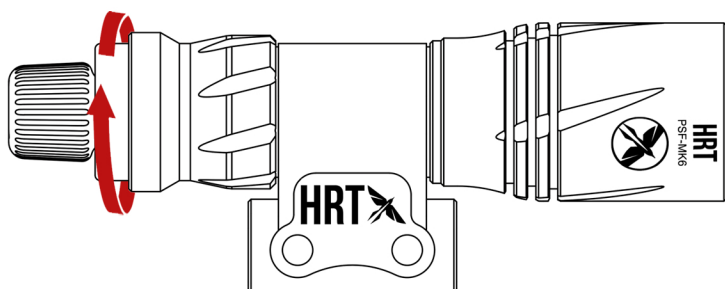
LIGHT OPERATION

PRESS ODA (OMNI DIRECTIONAL ACTIVATOR) TAILCAP IN ANY DIRECTION FOR MOMENTARY OUTPUT. PRESS THE ODA STRAIGHT IN TOWARDS THE HEAD UNTIL IT CLICKS FOR CONSTANT ON OPERATION. YOU CAN ALSO REMOVE THE ODA AND USE THE STANDARD PUSH BUTTON TAIL CAP FOR MOMENTARY OR CONSTANT ON.



LOCKOUT ODA TAILCAP

THE AWLS ILLUMINATION TOOLS CAN BE LOCKED OUT WHICH PREVENTS ACCIDENTAL ACTIVATION DURING STORAGE OR TRANSPORT. THE ODA TAILCAP WILL NEED TO BE INSTALLED PRIOR TO LIGHT OPERATION. TO LOCK OUT THE ODA TAILCAP, ROTATE COUNTERCLOCKWISE UNTIL LIGHT WILL NOT ACTIVATE WHEN PRESSED.



CAUTION

THE HRT AWLS ILLUMINATION TOOLS PROVIDES A POWERFUL BEAM. WHEN OPERATED FOR A LONG TIME, IT WILL GET WARM. THIS IS NORMAL AND IS NOT A DEFECT. ANY LED FLASHLIGHT OF SIMILAR SIZE AND PERFORMANCE WILL PRODUCE SIMILAR AMOUNTS OF HEAT DURING OPERATION. WHILE THIS HEATING MAY TRIGGER THE DROP REFLEX IF AN UNATTENDED HOT LIGHT IS PICKED UP, THE TEMPERATURE DOES NOT PRESENT A BURN HAZARD. WHEN USED TACTICALLY FOR SHORT PERIODS OF TIME TO CLEAR A ROOM, IDENTIFY SUBJECTS, ETC., HEATING WILL NOT BE A PROBLEM. NEVER PLACE THE FLASHLIGHT FACE DOWN AGAINST A FLAT SURFACE OR AGAINST ANY FLAMMABLE OBJECT. TRANSPORT OR STORE THE FLASHLIGHT IN A WAY THAT MINIMIZES THE CHANCE IT CAN ACCIDENTALLY BE TURNED ON.

MAINTENANCE

WIPE WITH A CLEAN, DRY CLOTH. FOR TIPS ON MAINTAINING YOUR HRT AWLS ILLUMINATION TOOL, VISIT WWW.HRTTACTICALGEAR.COM/AWLS.

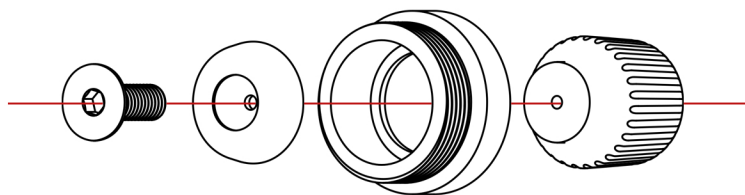


AWLS USER MANUAL

FULL SIZE 18650, COMPACT 18350, PSF-MK6 HEAD

ODA SENSITIVITY ADJUSTMENT

THE ODA (OMNI DIRECTIONAL ACTIVATOR) CAN BE ADJUSTED FOR THE PRESSURE SENSITIVITY FOR ACTIVATING THE LIGHT. THE AWLS IS PRE-INSTALLED WITH THE NEUTRAL SENSITIVITY DISK, THERE IS ALSO A (+) AND (-) ALSO INCLUDED IN THE PACKAGE OF YOUR AWLS. THE (+) DISK WILL INCREASE SENSITIVITY AND THE (-) WILL REDUCE THE SENSITIVITY FOR LESS CHANCE OF ACCIDENTAL DISCHARGE.



USING A 5/64 ALLEN WRENCH REMOVE THE SCREW HOLDING THE ODA. CHANGE YOUR SENSITIVITY DISK OF YOUR CHOICE. ONLY APPLY BLUE LOCTITE IF YOU DO NOT INTEND ON CHANGING THE DISK IN THE FUTURE.

BATTERY REPLACEMENT

ALL AWLS ILLUMINATION TOOLS SHIP WITH A BATTERY UNLOADED FROM THE DEVICE. TO LOAD OR REPLACE BATTERIES:

1. UNSCREW TAILCAP COUNTERCLOCKWISE AND REMOVE.
 2. REMOVE OLD BATTERY AND DISPOSE OF PROPERLY.
 3. INSERT NEW 18650, 18350 OR TWO CR123A LITHIUM BATTERIES WITH POSITIVE (+) TERMINALS ORIENTED TOWARDS THE HEAD.
 4. REPLACE TAILCAP BY SCREWING ON CLOCKWISE. PRESS PUSHBUTTON (WITH TAILCAP ENABLED) TO TEST.
- NOTE: NEVER MIX OLD AND NEW BATTERIES; ALWAYS REPLACE ALL BATTERIES AT SAME TIME.

BATTERY CHARGING

THE AWLS SYSTEM SHIPS WITH EITHER ONE 18650 OR 18350 USB LI-ION BATTERIES WITH INTEGRATED CHARGE PORTS (EXCLUDING PSF-MK6 HEAD).

BATTERY INFORMATION & WARNINGS

FOR COMPLETE BATTERY INFORMATION AND WARNINGS, REFERENCE THE BATTERY INFORMATION / WARNING INFORMATION BY VISITING VISIT WWW.HRTTACTICALGEAR.COM/AWLS.

